

Phoenix I

2,135 sq ft / Two Storey

Home Width: 28 ft

Elevation: **Prairie**

Ironstone
HOME BUILDERS

INCLUDED UPGRADES

- ✔ Siding with Exterior Stone
- ✔ Oversized 22'0" (w) x 37'0" (d) Three Car Garage
- ✔ 9'0" Main Floor Wall Height
- ✔ 9'0" Basement Wall Height
- ✔ 4 Piece Ensuite
- ✔ Walk Through Master Suite Closet
- ✔ Concrete Front Verandah
- ✔ Railing / Stubwall Around Three Storey Staircase
- ✔ 3'0" High Basement Windows Ideal For Basement Development
- ✔ Double Doors to All Bedroom Closets
- ✔ Main Floor Fireplace
- ✔ Second Floor Laundry Room
- ✔ Large Rear Coat Room
- ✔ Second Floor Linen Closet



SALES INQUIRIES: St Albert
Brenda Callander
T: 780 458-9515
C: 780 914-2074
bcallander@ironstonebuilders.ca

SALES INQUIRIES: Edmonton
T: 780 250-5333
F: 780 250-5322
salesedmonton@ironstonebuilders.ca

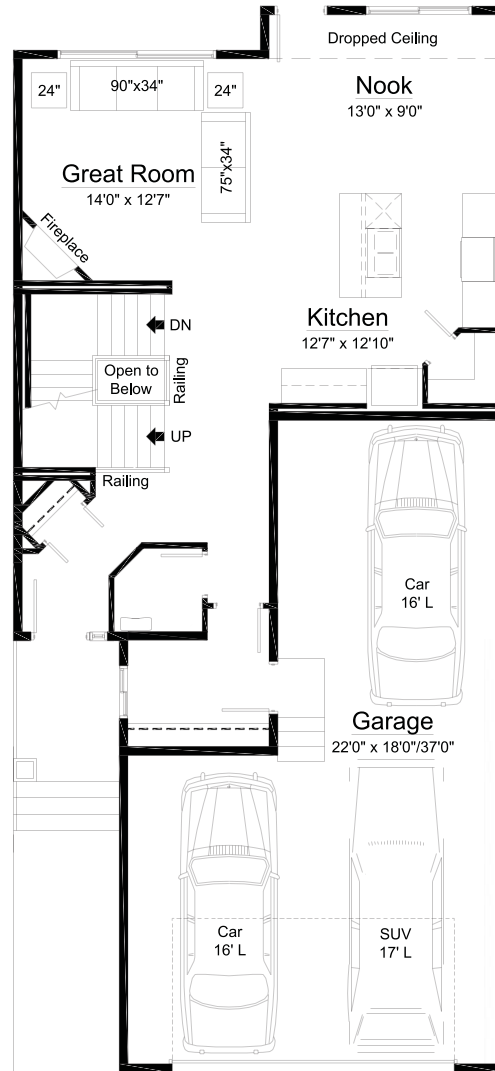
FOR MORE INFORMATION:
HEAD OFFICE - Edmonton
T: 780 454-7799
F: 780 454-7782
www.ironstonebuilders.ca

Phoenix I

Option: Three Car Garage / Three Storey Staircase / Walk Through Closet

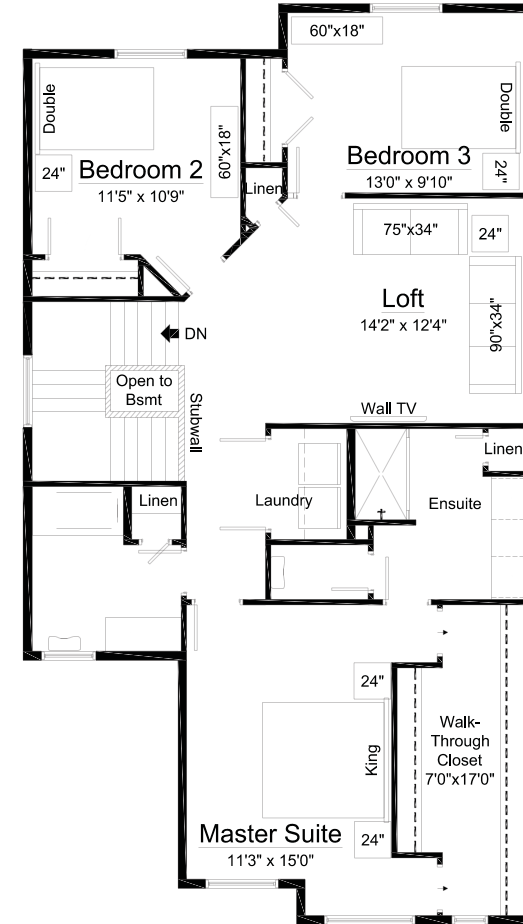
2,135 sq ft / Two Storey
Home Width: 28 ft

M
A
I
N
F
L
O
O
R



869 sq ft

U
P
P
E
R
F
L
O
O
R



1,266 sq ft