

Mason II

2,226 sq ft / Two Storey

Home Width: 28 ft

Elevation: **Craftsman**

Ironstone
HOME BUILDERS

INCLUDED UPGRADES

- ✔ Siding with Exterior Stone
- ✔ Oversized Kitchen Island
- ✔ Oversized 20'0" (w) x 22'0" (d) Two Car Garage
- ✔ 9'0" Main Floor Wall Height
- ✔ 9'0" Basement Wall Height
- ✔ Railing / Stubwall Around Three Storey Staircase
- ✔ His and Her Sink in Ensuite
- ✔ Oversized Master Bedroom Walk In Closet
- ✔ Designer Front Door with Sidelite
- ✔ Concrete Front Verandah
- ✔ Second Floor Laundry
- ✔ 3'0" High Basement Windows Ideal For Basement Development
- ✔ Double Doors to All Bedroom Closets
- ✔ Main Floor Fireplace
- ✔ 4 Bedrooms on Second Floor



SALES INQUIRIES: St Albert

Brenda Callander

T: 780 458-9515

C: 780 914-2074

bcallander@ironstonebuilders.ca

SALES INQUIRIES: Edmonton

T: 780 250-5333

F: 780 250-5322

salesedmonton@ironstonebuilders.ca

FOR MORE INFORMATION:

HEAD OFFICE - Edmonton

T: 780 454-7799

F: 780 454-7782

www.ironstonebuilders.ca

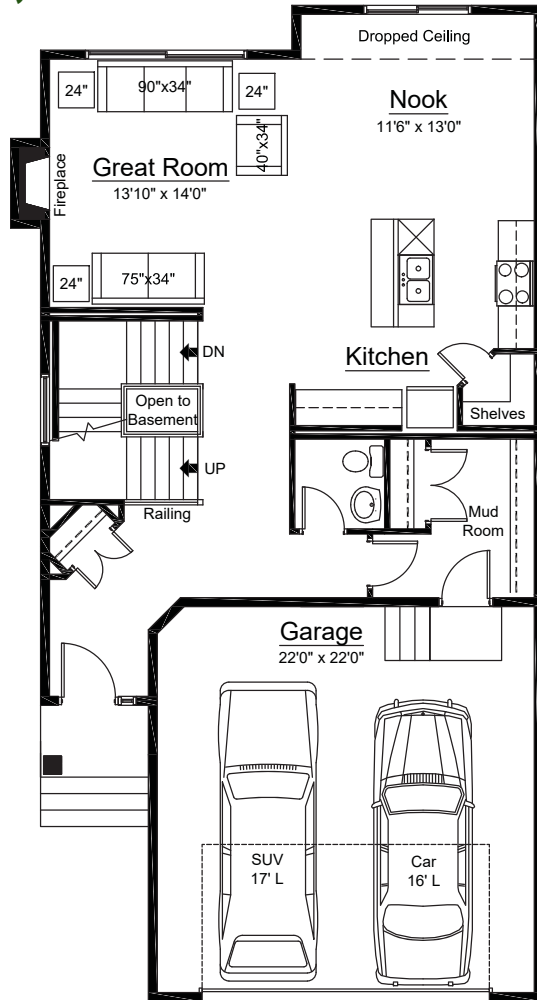
Mason II

Option: Oversized Garage / 4 Bedroom Option / Large Second Floor Bathroom

2,226 sq ft / Two Storey

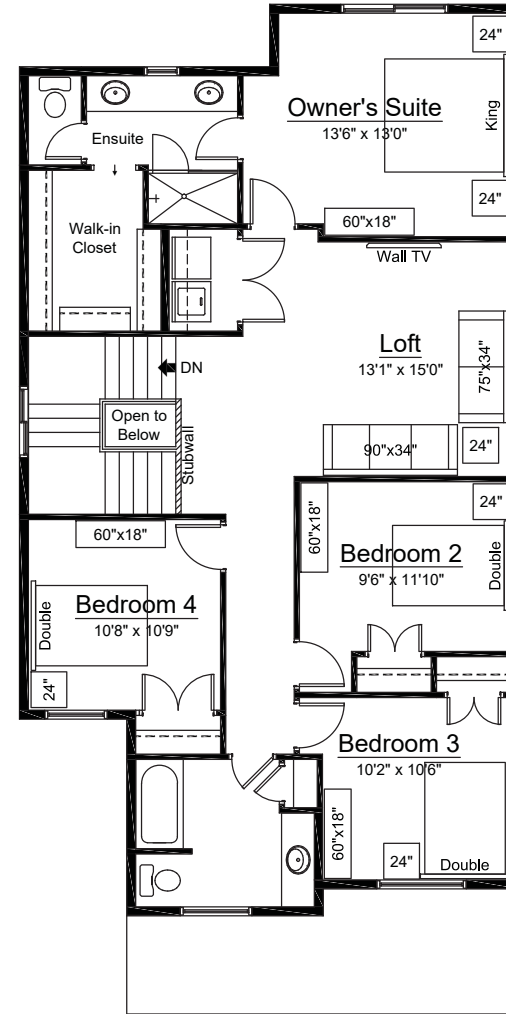
Home Width: 28 ft

M
A
I
N
F
L
O
O
R



939 sq ft

U
P
P
E
R
F
L
O
O
R



1,287 sq ft