

Mason I

2,138 sq ft / Two Storey

Home Width: 26 ft

Elevation: **Craftsman**

Ironstone
HOME BUILDERS

INCLUDED UPGRADES

- ✔ Siding with Exterior Stone
- ✔ Oversized Kitchen Island
- ✔ Oversized 20'0" (w) x 22'0" (d) Two Car Garage
- ✔ 9'0" Main Floor Wall Height
- ✔ 9'0" Basement Wall Height
- ✔ Railing / Stubwall Around Three Storey Staircase
- ✔ His and Her Sink in Ensuite
- ✔ Oversized Master Bedroom Walk In Closet
- ✔ Designer Front Door with Sidelite
- ✔ Concrete Front Verandah
- ✔ Second Floor Laundry
- ✔ 3'0" High Basement Windows Ideal For Basement Development
- ✔ Double Doors to All Bedroom Closets
- ✔ Main Floor Fireplace
- ✔ 4 Bedrooms on Second Floor
- ✔ Second Floor Laundry



SALES INQUIRIES: St Albert
Brenda Callander
T: 780 458-9515
C: 780 914-2074
bcallander@ironstonebuilders.ca

SALES INQUIRIES: Edmonton
T: 780 250-5333
F: 780 250-5322
salesedmonton@ironstonebuilders.ca

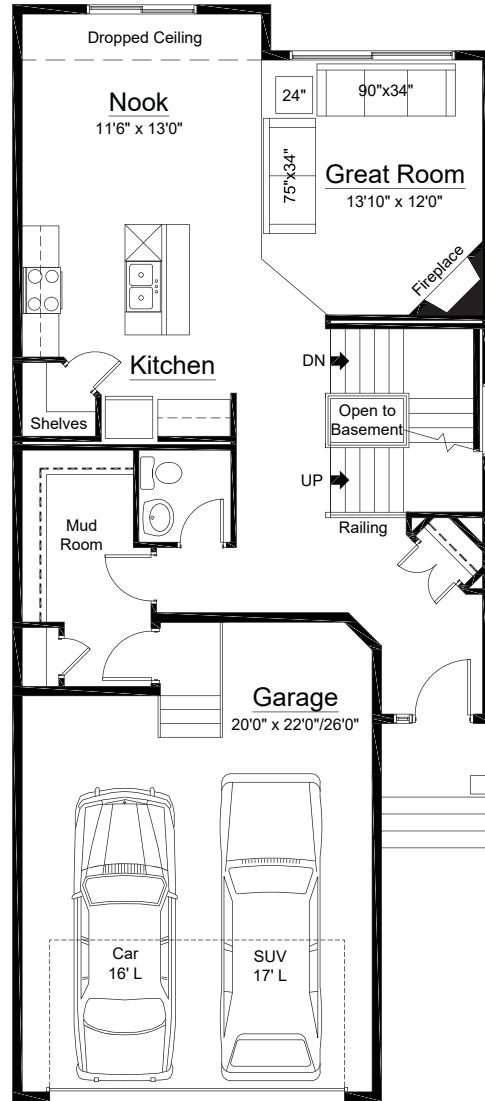
FOR MORE INFORMATION:
HEAD OFFICE - Edmonton
T: 780 454-7799
F: 780 454-7782
www.ironstonebuilders.ca

Mason

Option: 4th Bedroom Option / Second Floor Loft Option

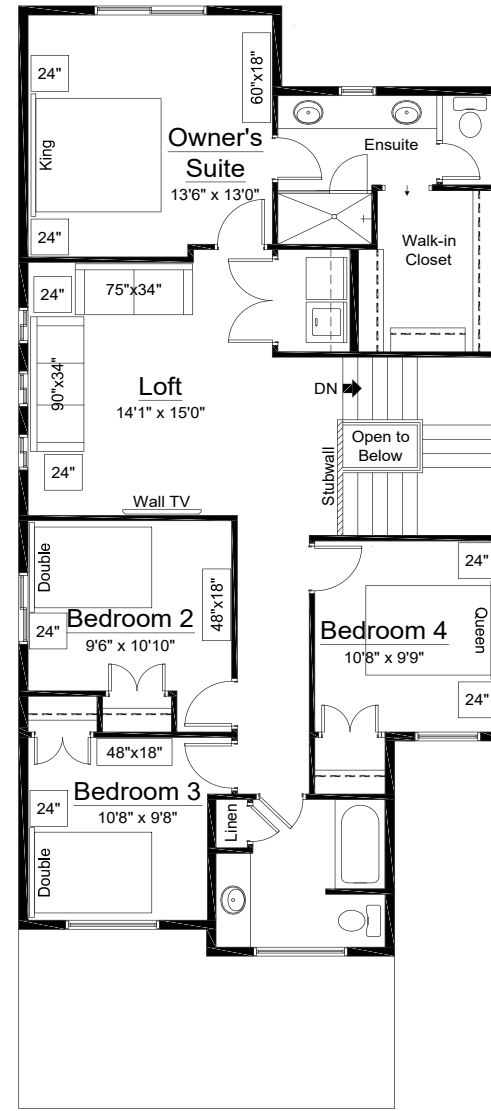
2,138 sq ft / Two Storey
Home Width: 26 ft

M
A
I
N
F
L
O
O
R



910 sq ft

U
P
P
E
R
F
L
O
O
R



1,228 sq ft