

# Madison I

1,977 sq ft / Two Storey

Home Width: 26 ft

Elevation: **Prairie**

**Ironstone**  
HOME BUILDERS

## INCLUDED UPGRADES

- ✔ Siding with Exterior Stone
- ✔ Oversized 20'0" (w) x 22'6" (d) Double Car Garage
- ✔ 9'0" Main Floor Wall Height
- ✔ 9'0" Basement Wall Height
- ✔ 4 Piece Ensuite
- ✔ Large Master Bedroom Walk In Closet
- ✔ Concrete Front Verandah
- ✔ Railing / Stubwall Around Open To Above Staircase
- ✔ 3'0" High Basement Windows Ideal For Basement Development
- ✔ Double Doors to All Bedroom Closets
- ✔ Main Floor Fireplace
- ✔ Second Floor Laundry Room
- ✔ Large Rear Coat Room
- ✔ Oversized Bedrooms
- ✔ Walk Through Pantry



**SALES INQUIRIES: St Albert**  
**Brenda Callander**  
T: 780 458-9515  
C: 780 914-2074  
[bcallander@ironstonebuilders.ca](mailto:bcallander@ironstonebuilders.ca)

**SALES INQUIRIES: Edmonton**  
T: 780 250-5333  
F: 780 250-5322  
[salesedmonton@ironstonebuilders.ca](mailto:salesedmonton@ironstonebuilders.ca)

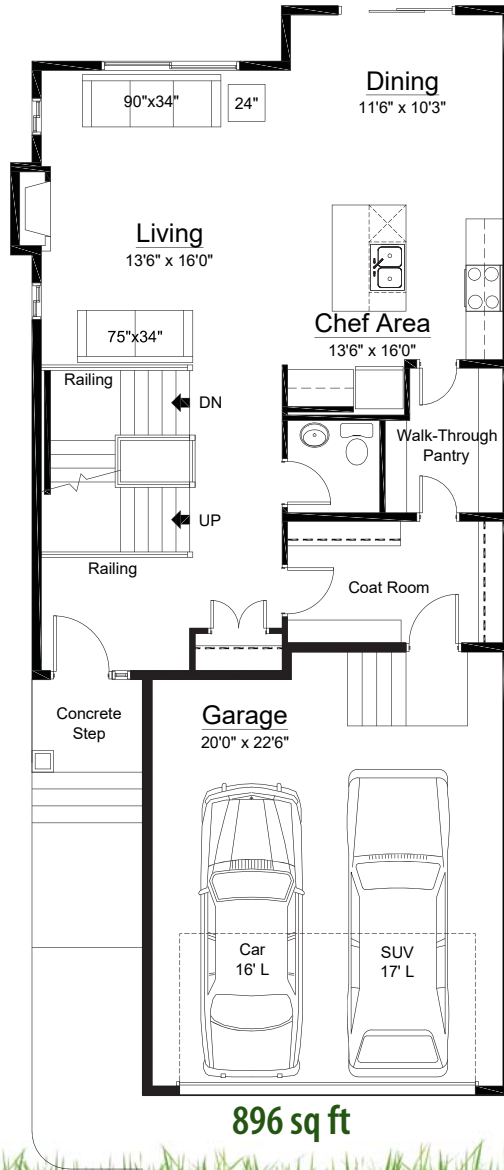
**FOR MORE INFORMATION:**  
**HEAD OFFICE - Edmonton**  
T: 780 454-7799  
F: 780 454-7782  
[www.ironstonebuilders.ca](http://www.ironstonebuilders.ca)

# Madison

Option: Two Storey Main Entrance / Second Floor Laundry Room

1,977 sq ft / Two Storey  
Home Width: 26 ft

M  
A  
I  
N  
F  
L  
O  
O  
R



U  
P  
P  
E  
R  
F  
L  
O  
O  
R

