

Kinley I

1,564 sq ft / Two Storey

Home Width: 26 ft

Elevation: **Prairie**

Ironstone
HOME BUILDERS

INCLUDED UPGRADES

- ✔ Siding with Exterior Stone
- ✔ Oversized 21'0" (w) x 21'0" (d) Double Car Garage
- ✔ 9'0" Main Floor Wall Height
- ✔ 9'0" Basement Wall Height
- ✔ Railing From Main Floor to Second Floor Landing
- ✔ Second Floor Linen Closet
- ✔ Functional Rear Coat Room
- ✔ Concrete Front Verandah
- ✔ Open To Below Front Entrance
- ✔ 3'0" High Basement Windows Ideal for Basement Development
- ✔ Second Floor Stackable Laundry Area
- ✔ Oversized Bedrooms on Second Floor



SALES INQUIRIES: St Albert
Brenda Callander
T: 780 458-9515
C: 780 914-2074
bcallander@ironstonebuilders.ca

SALES INQUIRIES: Edmonton
T: 780 250-5333
F: 780 250-5322
salesedmonton@ironstonebuilders.ca

FOR MORE INFORMATION:
HEAD OFFICE - Edmonton
T: 780 454-7799
F: 780 454-7782
www.ironstonebuilders.ca

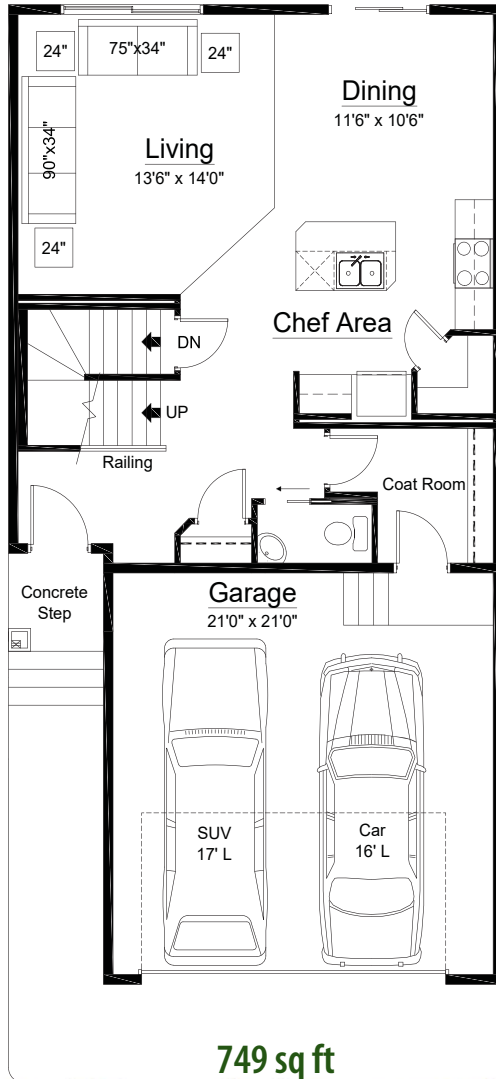
Kinley I

Option: Second Floor Laundry Area / Two Storey Front Entrance

1,564 sq ft / Two Storey

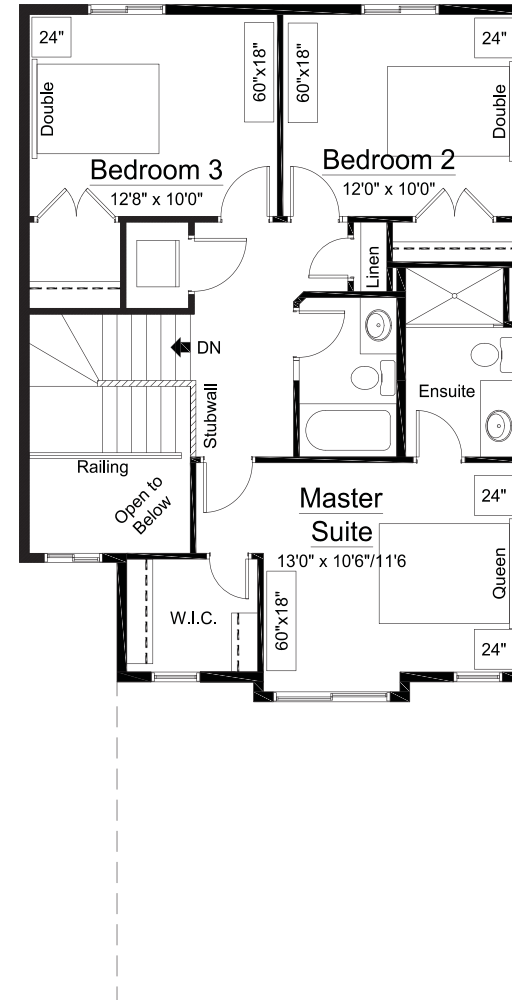
Home Width: 26 ft

M
A
I
N
F
L
O
O
R



749 sq ft

U
P
P
E
R
F
L
O
O
R



815 sq ft