

# Eclipse III

2,396 sq ft / Two Storey

Home Width: 28 ft

Elevation: **Craftsman**

**Ironstone**  
HOME BUILDERS

## INCLUDED UPGRADES

- ✔ Siding with Exterior Stone
- ✔ Oversized 22'0"(w) x 21'0" / 26'6"(d) Dbl Car Garage with Storage Bay
- ✔ 9'0" Main Floor Wall Height
- ✔ 9'0" Basement Wall Height
- ✔ Three Storey Staircase with Railing / Stubwall
- ✔ Walk Thru Pantry
- ✔ Large Master Bedroom Walk In Closet
- ✔ Main Floor Office
- ✔ Concrete Front Verandah
- ✔ 3' High BSMT Windows - Ideal for BSMT Development
- ✔ Double Doors to All Bedroom Closets
- ✔ Main Floor Fireplace
- ✔ 2nd Floor Laundry Room
- ✔ Large Rear Coat Room
- ✔ Oversized Living and Dining Room



**SALES INQUIRIES: St Albert**  
**Brenda Callander**  
T: 780 458-9515  
C: 780 914-2074  
[bcallander@ironstonebuilders.ca](mailto:bcallander@ironstonebuilders.ca)

**SALES INQUIRIES: Edmonton**  
T: 780 250-5333  
F: 780 250-5322  
[salesedmonton@ironstonebuilders.ca](mailto:salesedmonton@ironstonebuilders.ca)

**FOR MORE INFORMATION:**  
**HEAD OFFICE - Edmonton**  
T: 780 454-7799  
F: 780 454-7782  
[www.ironstonebuilders.ca](http://www.ironstonebuilders.ca)

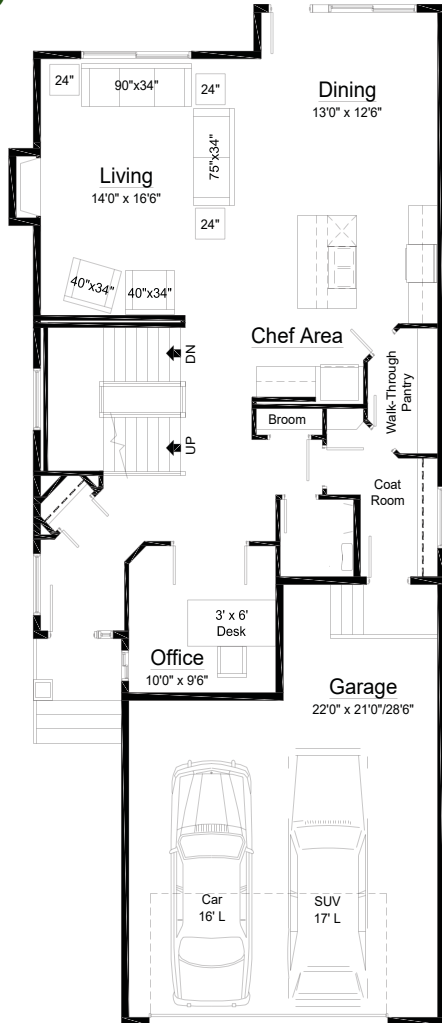
# Eclipse III

Option: Garage Storage Bay Opt / 3 Storey Staircase / 4th Bedroom Option

2,396 sq ft / Two Storey

Home Width: 28 ft

MAIN FLOOR



1,108 sq ft

UPPER FLOOR



1,288 sq ft