

Eclipse I

2,253 sq ft / Two Storey

Home Width: 28 ft

Elevation: Craftsman

Ironstone
HOME BUILDERS

INCLUDED UPGRADES

- ✔ Siding with Exterior Stone
- ✔ Oversized 22'0" (w) x 22'0" / 30'6" (d) Dbl Car Garage with Storage Bay
- ✔ 9'0" Main Floor Wall Height
- ✔ 9'0" Basement Wall Height
- ✔ Three Storey Staircase with Railing / Stubwall
- ✔ Double Sink in Ensuite
- ✔ Large Master Bedroom Walk In Closet
- ✔ Main Floor Den
- ✔ Concrete Front Verandah
- ✔ 3' High BSMT Windows - Ideal for BSMT Development
- ✔ Double Doors to All Bedroom Closets
- ✔ Main Floor Fireplace
- ✔ 2nd Floor Laundry Room
- ✔ Large Rear Coat Room
- ✔ Oversized Bedrooms



SALES INQUIRIES: St Albert
Brenda Callander
T: 780 458-9515
C: 780 914-2074
bcallander@ironstonebuilders.ca

SALES INQUIRIES: Edmonton
T: 780 250-5333
F: 780 250-5322
salesedmonton@ironstonebuilders.ca

FOR MORE INFORMATION:
HEAD OFFICE - Edmonton
T: 780 454-7799
F: 780 454-7782
www.ironstonebuilders.ca

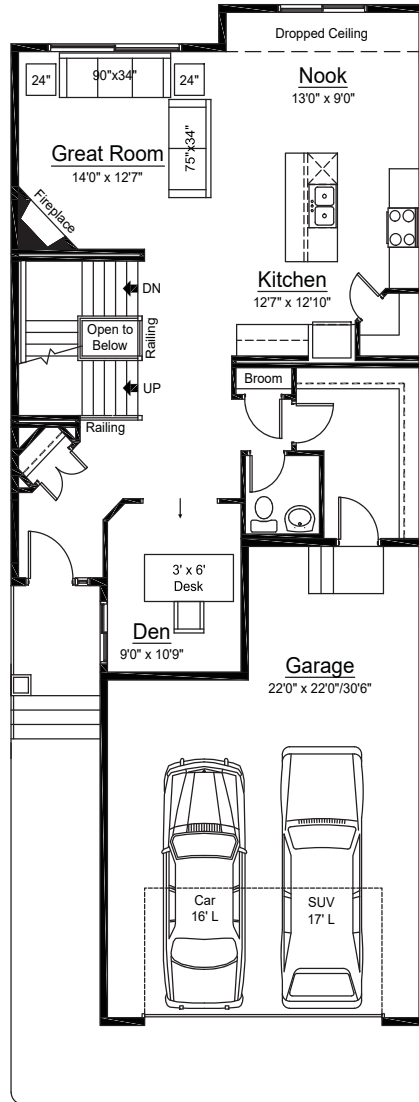
Eclipse I

2,253 sq ft / Two Storey

Home Width: 28 ft

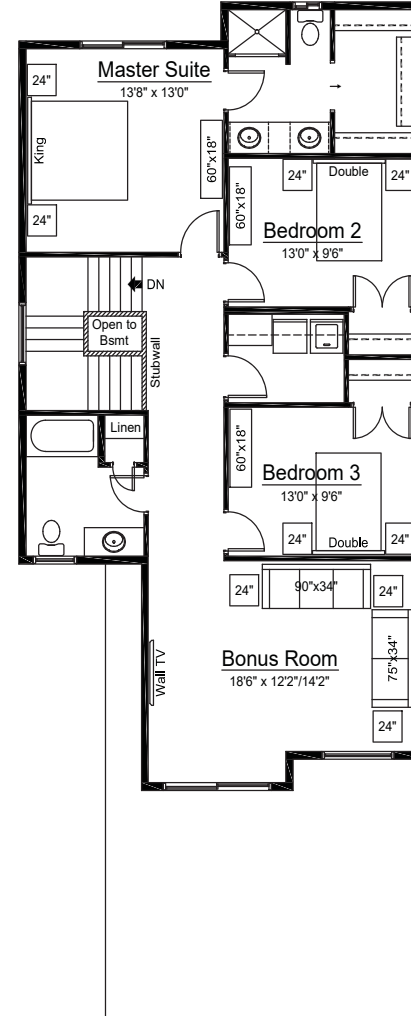
Option: Garage Storage Bay Opt / 3 Storey Staircase / Oversized 2nd Floor Bathroom

M
A
I
N
F
L
O
O
R



1,023 sq ft

U
P
P
E
R
F
L
O
O
R



1,230 sq ft